

**COMMERCIAL / MULTI-  
FAMILY LAND IN  
MANOR, TX  
FOR SALE**

PROPERTY ID: 227224,  
236847, 526033

37.09 ACRES



**LOCATION:** LOCATED 7 MILES FROM THE SAMSUNG AUSTIN SEMICONDUCTOR FACTORY, 10 MILES FROM TELSA, AND 2 MILES FROM A WALMART.

GALAXY REALTY IS THE EXCLUSIVE AGENCY FOR THIS LAND IN MANOR, TX

**ZONING:** SF-1



833 Castle Ridge Rd, Austin, TX 78746  
512.328.3850  
[www.galaxyrealtyservices.com](http://www.galaxyrealtyservices.com)

Rathna Reddy  
Broker & Land Developer  
512.740-6264  
[txrathna@gmail.com](mailto:txrathna@gmail.com)

Vema Reddy  
Broker & Land Developer  
512.222.7236  
[vema@galaxyrealtyservices.com](mailto:vema@galaxyrealtyservices.com)



# CONTENTS

- OVERVIEW
- PROPERTY PHOTO
- AERIAL MAP
- STREET MAP
- SURVEY
- ZONING MAP
- WATER MAP
- WASTEWATER MAP
- CONTACT US



833 Castle Ridge Rd, Austin, TX 78746  
512.328.3850  
[www.galaxyrealtyservices.com](http://www.galaxyrealtyservices.com)

Rathna Reddy  
Broker & Land Developer  
512.740-6264  
[txrathna@gmail.com](mailto:txrathna@gmail.com)

Vema Reddy  
Broker & Land Developer  
512.222.7236  
[vema@galaxyrealtyservices.com](mailto:vema@galaxyrealtyservices.com)



# OVERVIEW

## PROPERTY SUMMARY

This 37.09-acre lot is conveniently located just over 3 miles from the intersection of I-45 and HWY 290. It is 7 miles from the Samsung Austin Semiconductor factory, 10 miles from Telsa, and 2 miles from Walmart. This property is inside the city of Manor and has access to all city utilities.

The property is ideal for multi-family development or commercial use. Currently, there are plans for FM 973 HWY to pass through the property. You can find details on the FM 973 plans in our attached digital documents, however, we encourage you to speak with the city of Manor or TX-Dot for more information. The property will need to be rezoned because of Blake Manor Rd and FM 973.

The property can be accessed by Blake Manor Rd (802 ft of road frontage) and by Smith Ln. This property contains 3 parcels of land.



833 Castle Ridge Rd, Austin, TX 78746  
512.328.3850  
[www.galaxyrealtyservices.com](http://www.galaxyrealtyservices.com)

Rathna Reddy  
Broker & Land Developer  
512.740-6264  
[txrathna@gmail.com](mailto:txrathna@gmail.com)

Vema Reddy  
Broker & Land Developer  
512.222.7236  
[vema@galaxyrealtyservices.com](mailto:vema@galaxyrealtyservices.com)



# PROPERTY PHOTOS

---

## Virtual Tour Link



## Aerial Tour Link



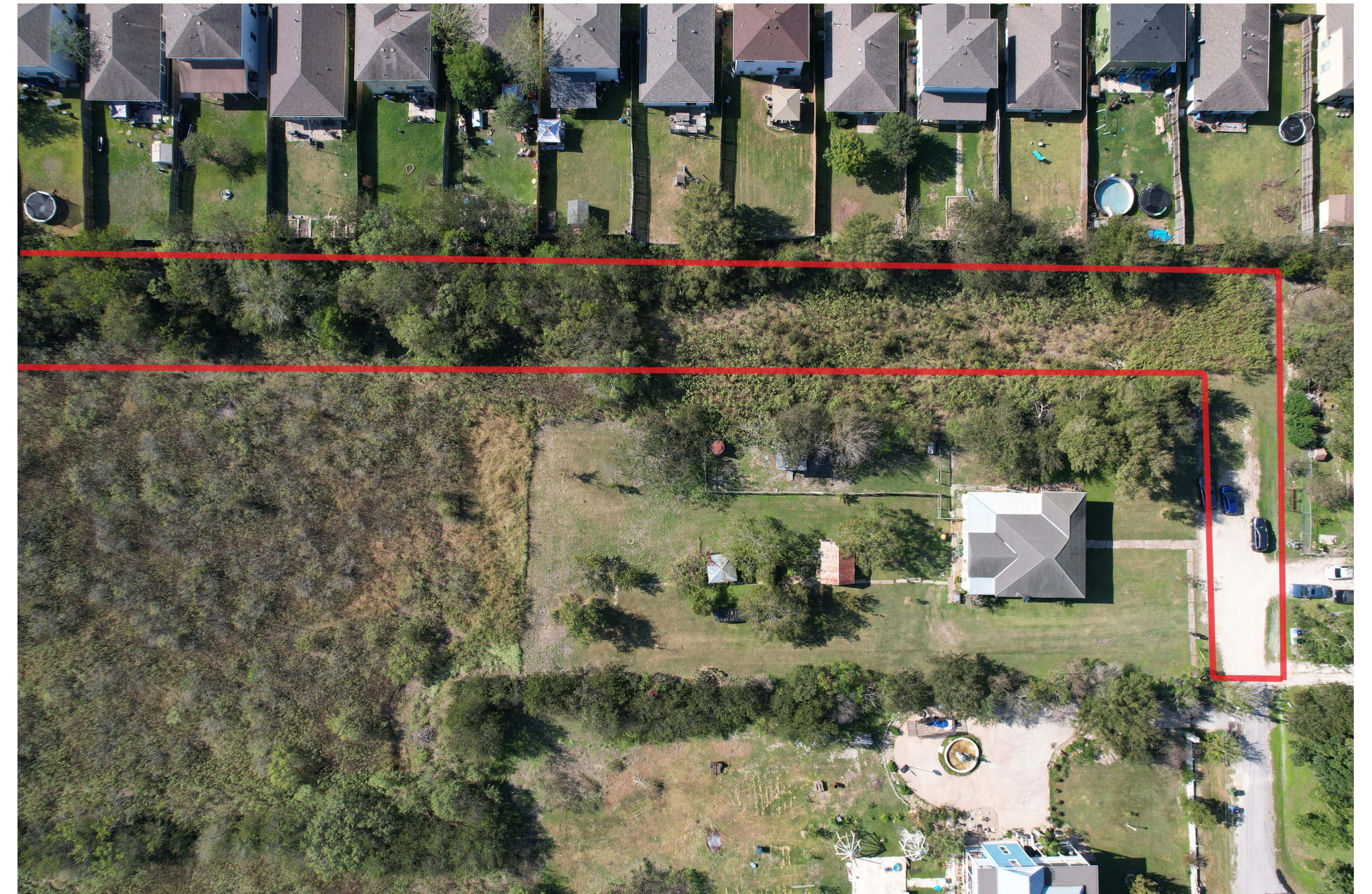
833 Castle Ridge Rd, Austin, TX 78746  
512.328.3850  
[www.galaxyrealtyservices.com](http://www.galaxyrealtyservices.com)

Rathna Reddy  
Broker & Land Developer  
512.740-6264  
[txrathna@gmail.com](mailto:txrathna@gmail.com)

Vema Reddy  
Broker & Land Developer  
512.222.7236  
[vema@galaxyrealtyservices.com](mailto:vema@galaxyrealtyservices.com)



# PROPERTY PHOTOS



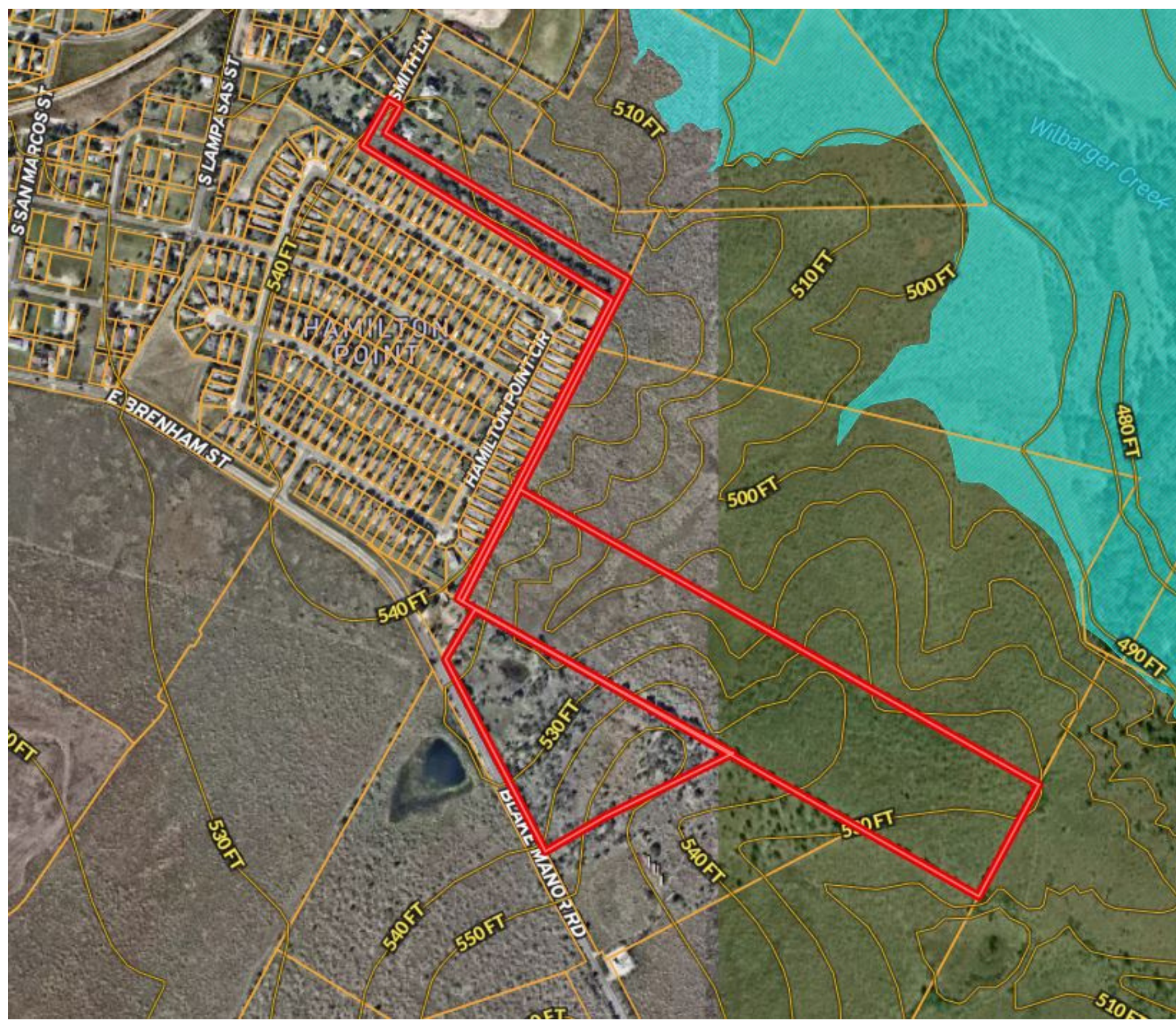
833 Castle Ridge Rd, Austin, TX 78746  
512.328.3850  
[www.galaxyrealtyservices.com](http://www.galaxyrealtyservices.com)

Rathna Reddy  
Broker & Land Developer  
512.740-6264  
[txrathna@gmail.com](mailto:txrathna@gmail.com)

Vema Reddy  
Broker & Land Developer  
512.222.7236  
[vema@galaxyrealtyservices.com](mailto:vema@galaxyrealtyservices.com)



# AERIAL MAP



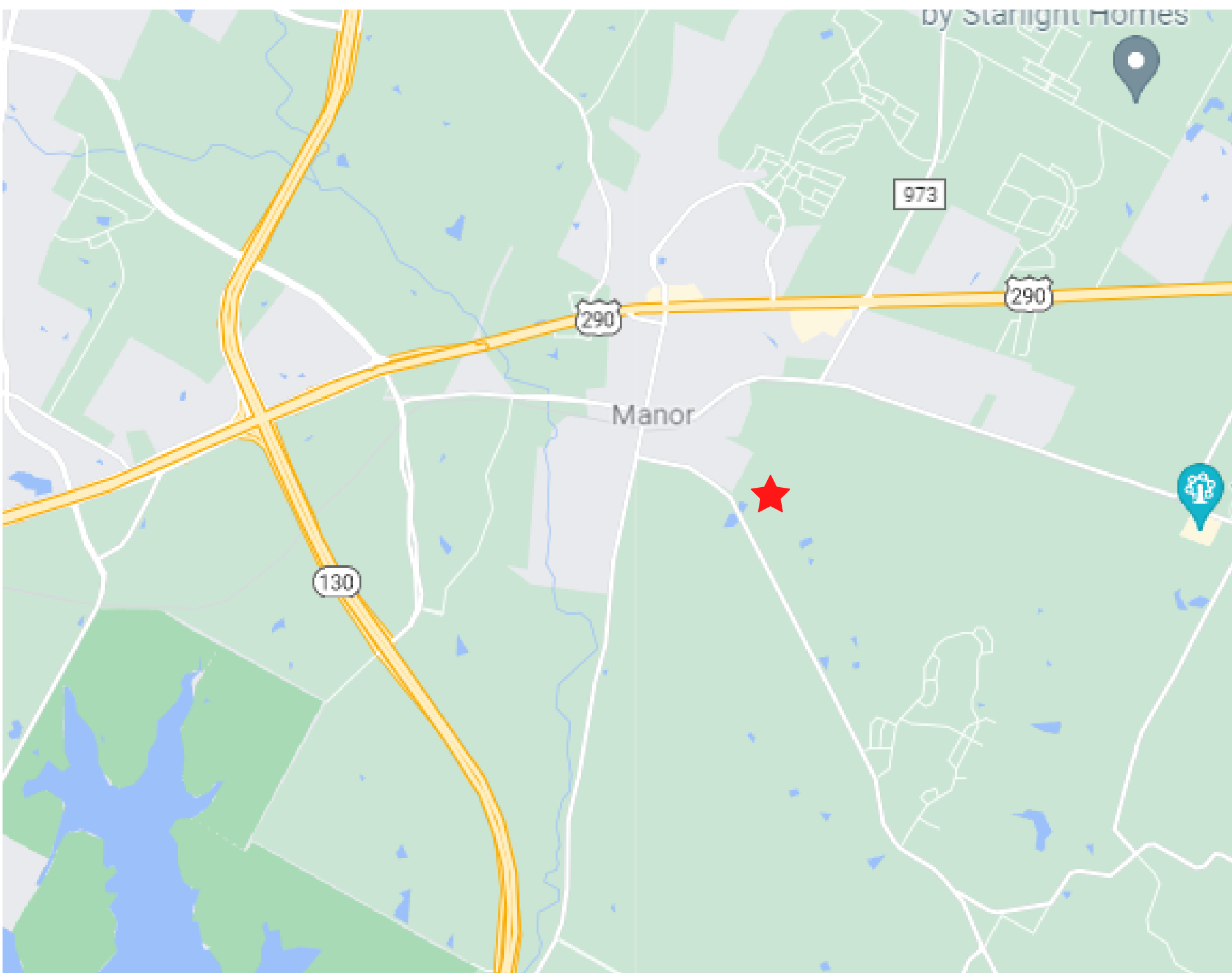
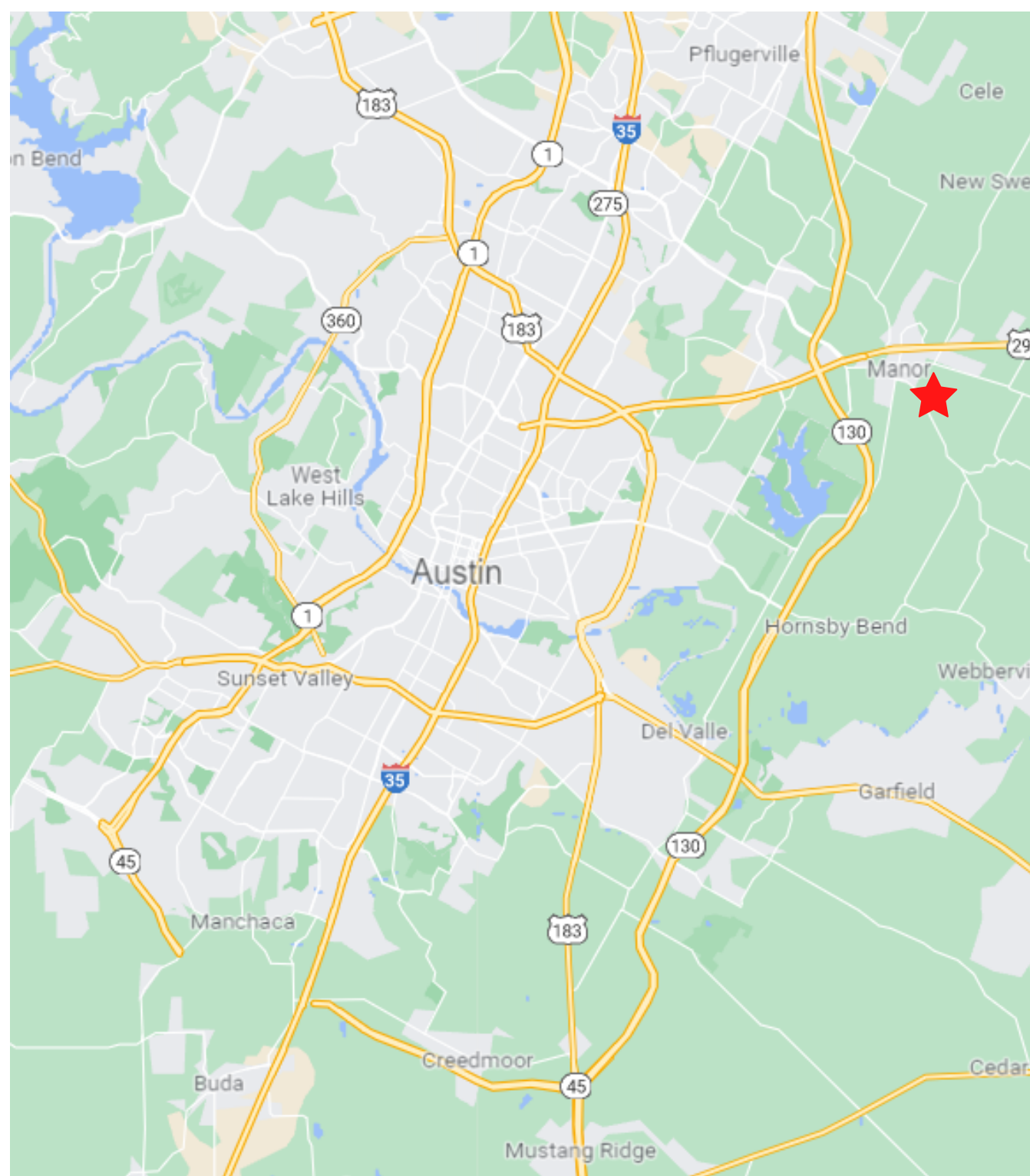
833 Castle Ridge Rd, Austin, TX 78746  
512.328.3850  
[www.galaxyrealtyservices.com](http://www.galaxyrealtyservices.com)

Rathna Reddy  
Broker & Land Developer  
512.740-6264  
[txrathna@gmail.com](mailto:txrathna@gmail.com)

Vema Reddy  
Broker & Land Developer  
512.222.7236  
[vema@galaxyrealtyservices.com](mailto:vema@galaxyrealtyservices.com)



# STREET MAP



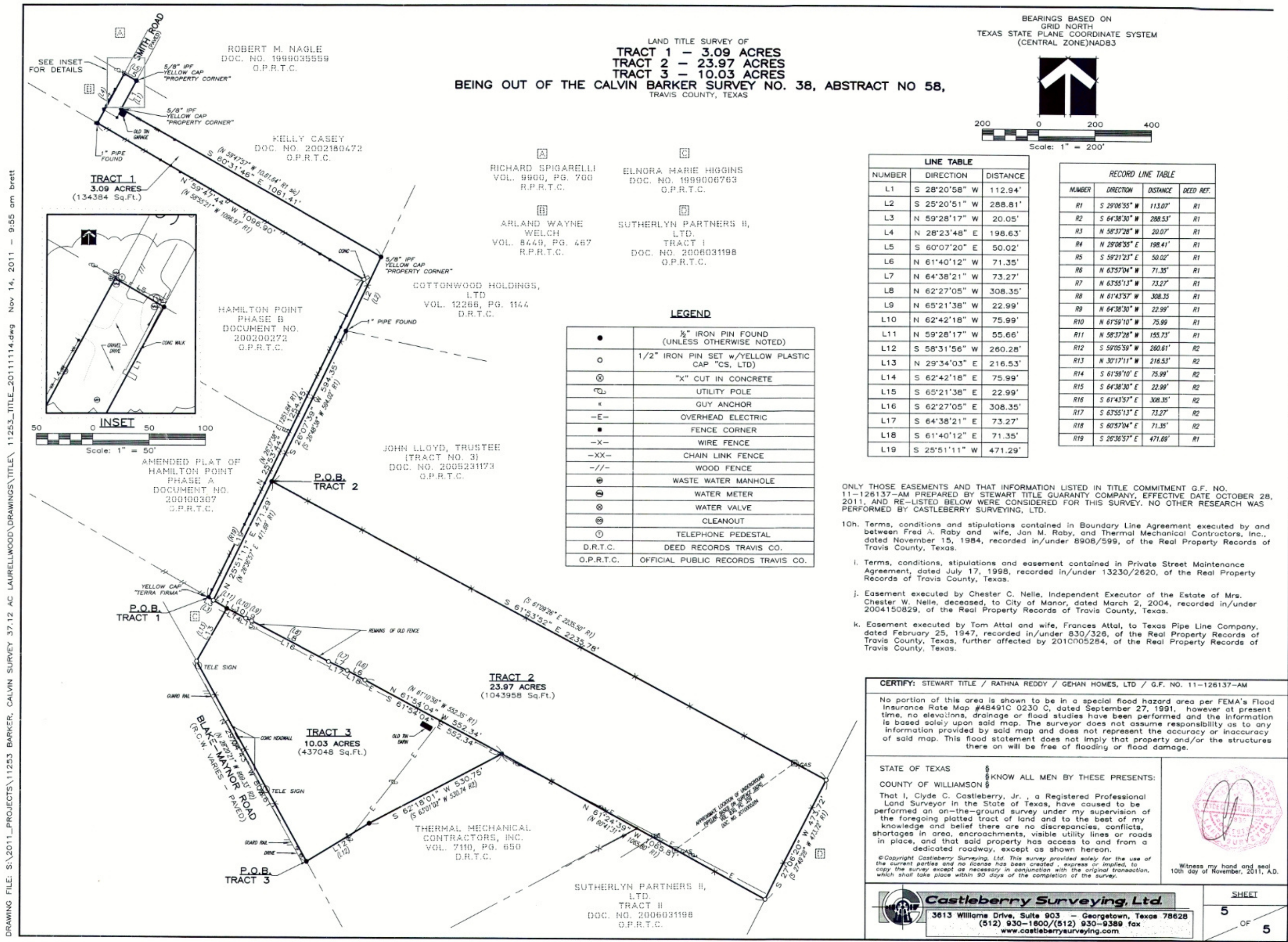
833 Castle Ridge Rd, Austin, TX 78746  
512.328.3850  
[www.galaxyrealtyservices.com](http://www.galaxyrealtyservices.com)

Rathna Reddy  
Broker & Land Developer  
512.740-6264  
[txrathna@gmail.com](mailto:txrathna@gmail.com)

Vema Reddy  
Broker & Land Developer  
512.222.7236  
[vema@galaxyrealtyservices.com](mailto:vema@galaxyrealtyservices.com)



Survey





# Current Zoning Map



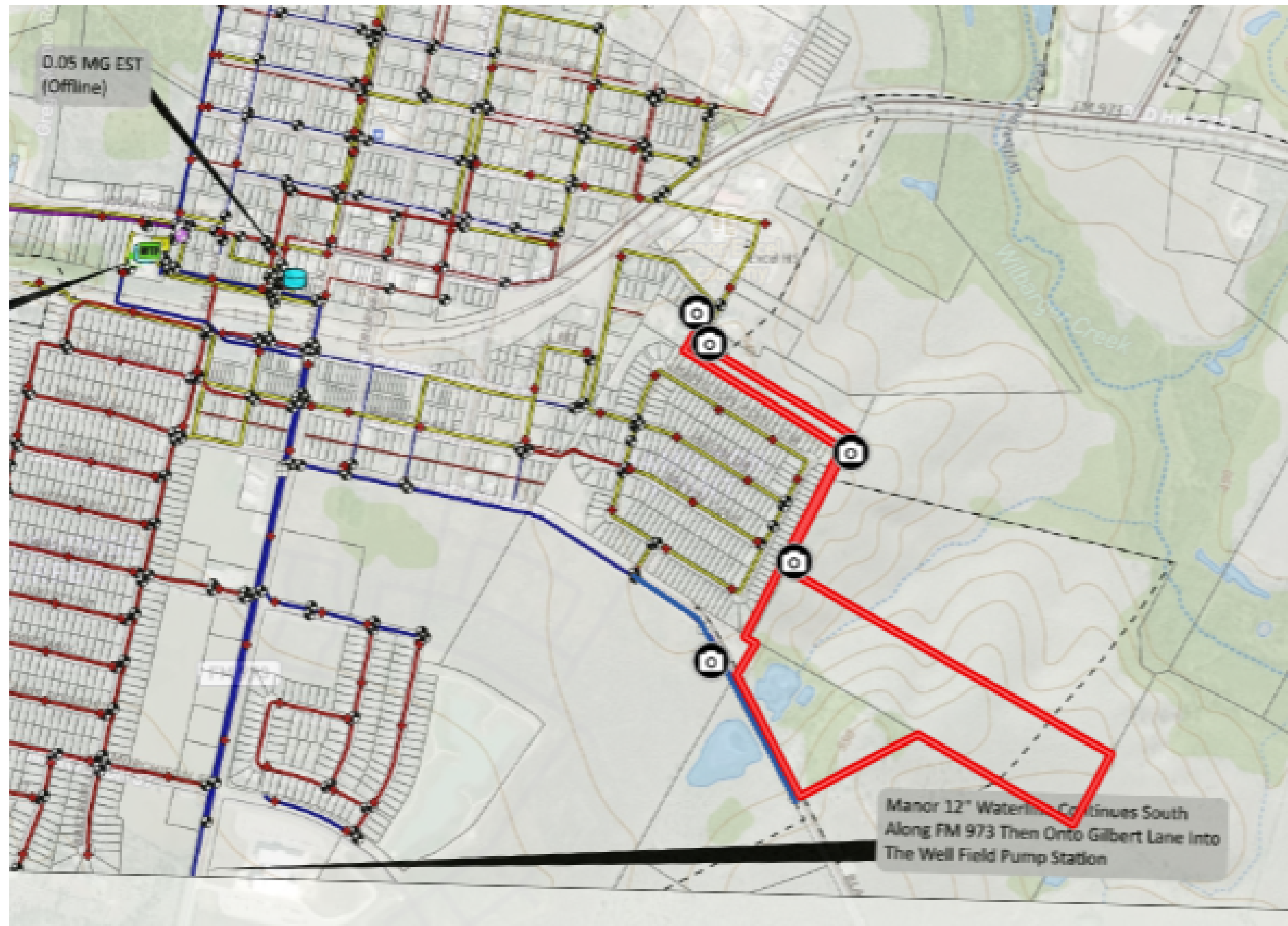
833 Castle Ridge Rd, Austin, TX 78746  
512.328.3850  
www.galaxyrealtyservices.com

Rathna Reddy  
Broker & Land Developer  
512.740-6264  
txrathna@gmail.com

Vema Reddy  
Broker & Land Developer  
512.222.7236  
vema@galaxyrealtyservices.com

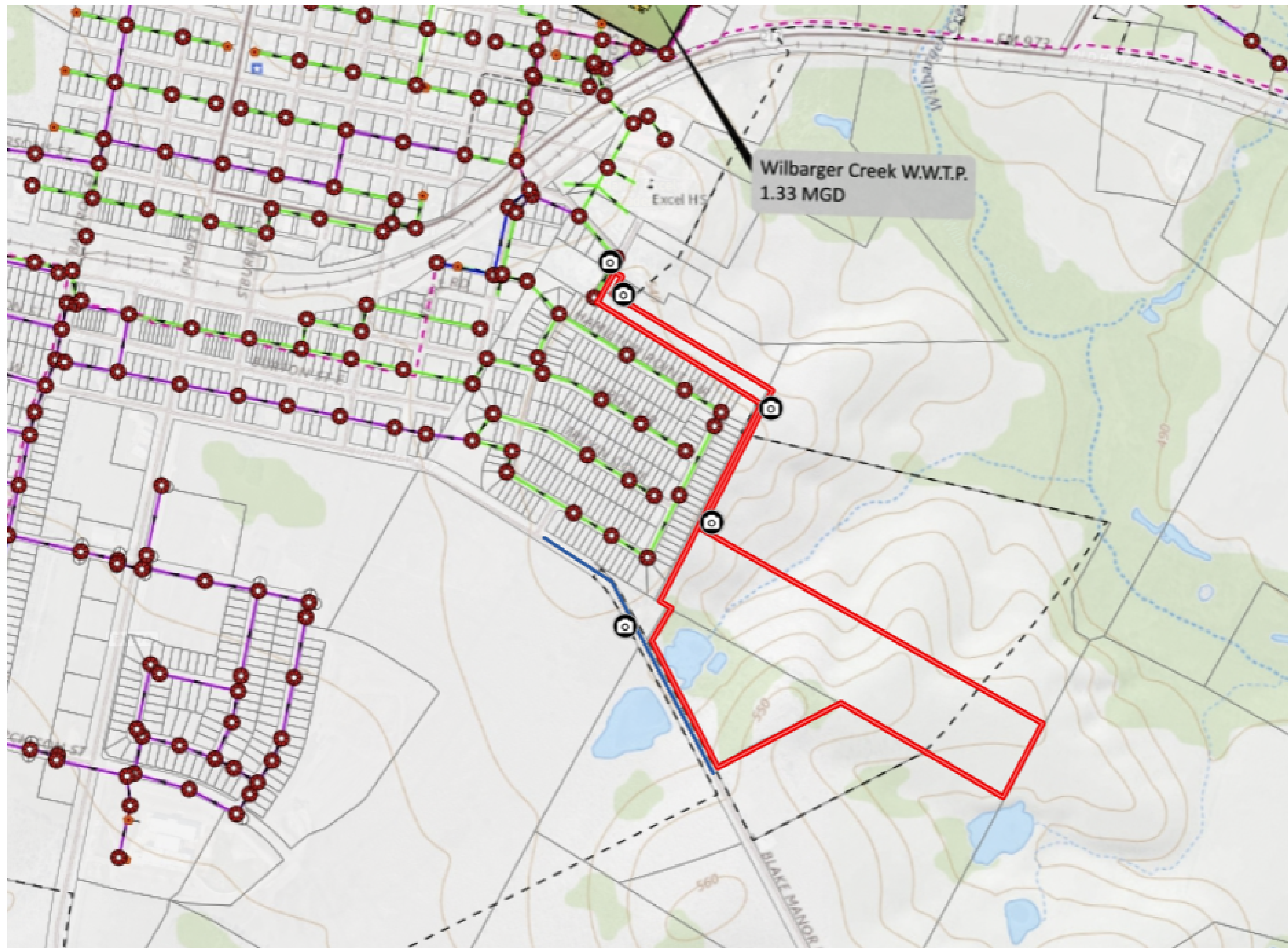


# Water Map



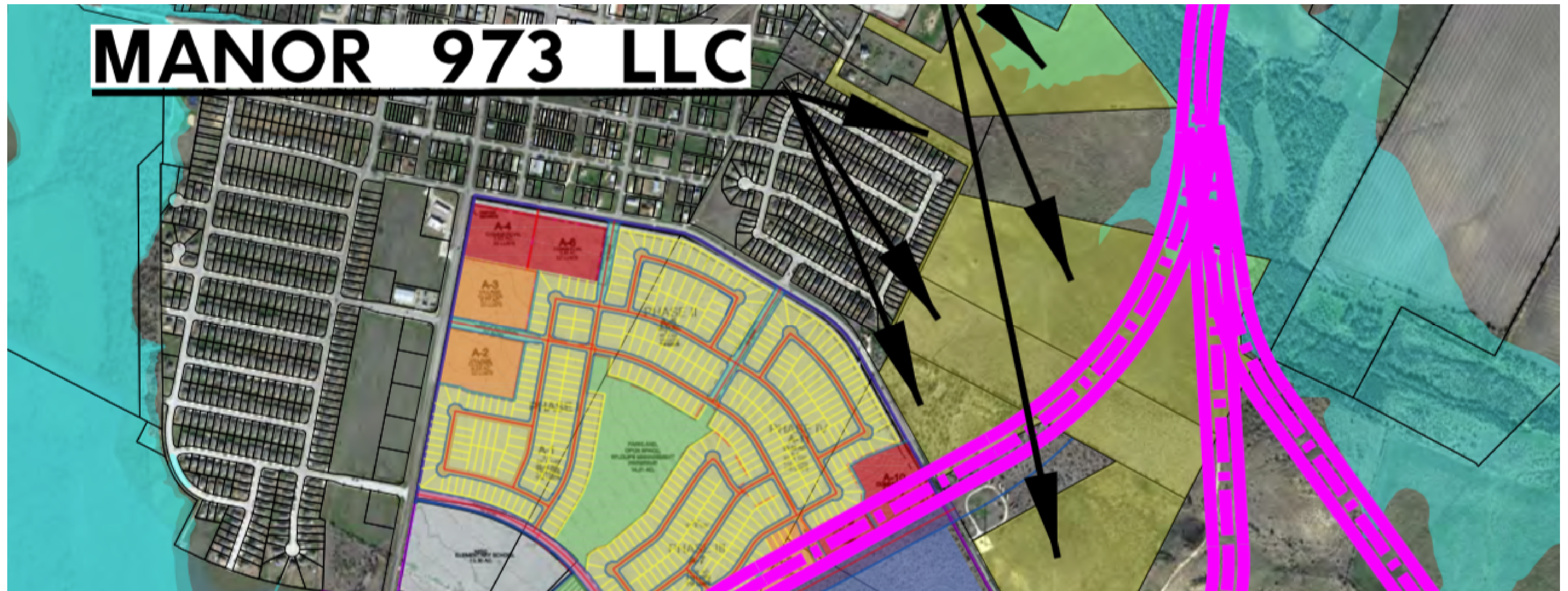


# Waterwater Map





# TXDOT FM 973 Plans - Purple (Potential)





# Property Info

---

- Price Guidelines: TAKING ALL OFFERS ABOVE \$6 SQFT
- Property ID: 227224, 236847, 526033
- County: Travis
- GPS Coordinating (30.333466, -97.549624)
- Closest Address: 202 Smith Gin St, 16929 Hamilton Point Cir
- City of Manor: [Map & Exhibits](#)



833 Castle Ridge Rd, Austin, TX 78746  
512.328.3850  
[www.galaxyrealtyservices.com](http://www.galaxyrealtyservices.com)

Rathna Reddy  
Broker & Land Developer  
512.740-6264  
[txrathna@gmail.com](mailto:txrathna@gmail.com)

Vema Reddy  
Broker & Land Developer  
512.222.7236  
[vema@galaxyrealtyservices.com](mailto:vema@galaxyrealtyservices.com)



# Contact Us

---



Rathna Reddy  
Founder, Broker, Land Developer  
txrathna@gmail.com  
512-740-6264



Vema Reddy  
Realtor  
vema@galaxyrealtyservices.com  
512-222-7236



833 Castle Ridge Rd, Austin, TX 78746  
512.328.3850  
www.galaxyrealtyservices.com

Rathna Reddy  
Broker & Land Developer  
512.740-6264  
txrathna@gmail.com

Vema Reddy  
Broker & Land Developer  
512.222.7236  
vema@galaxyrealtyservices.com